

# LINETRAXX<sup>®</sup> SmartDetect RCMS410/425

Residual current monitoring devices

+ - + - + -  
- + - + - +  
+ - + - + -  
- + -

State-of-the-art measurement technology  
for electrical systems

- Keep track of things
- Detecting fault currents
- Preventing downtime
- Simple and intuitive operation
- Compact design
- Configuration via smartphone app

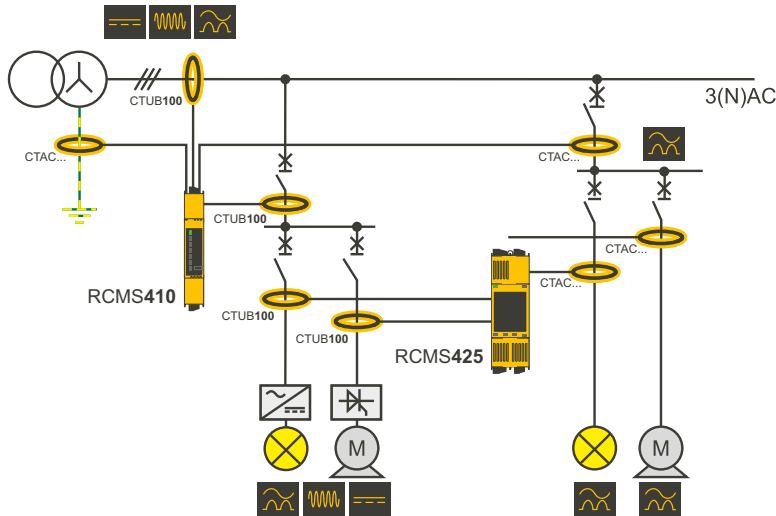
+ -  
- +  
+ - +  
- + -



- + -  
+ - +  
- + -

# The RCMS410/425 at a glance

- All-current-sensitive measurement, types A/F/B/B+
- Measuring range 2 mA...70 A
- Type A/F residual operating current: 6 mA...30 A
- Type B/B+ residual operating current 10 mA...10 A
- Frequency response DC...20 kHz
- DC, AC, RMS analysis
- Modbus RTU interface
- NFC interface for configuration via a smartphone app
- LED or TFT display
- Additional function modules



				+	-
-	+	-	+	-	+
+	-	+	-	+	-
-	+	-	+	-	+

+	-	+	-	+
-	+	-	+	-
+	-	+	-	+



**Bender GmbH & Co. KG**  
 Londorfer Straße 65  
 35305 Grünberg  
 Germany

Tel.: +49 6401 807-0  
 info@bender.de  
 www.bender.de