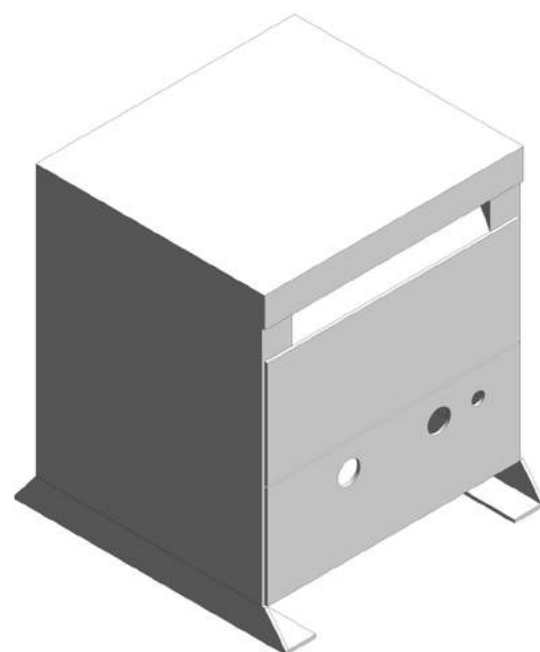
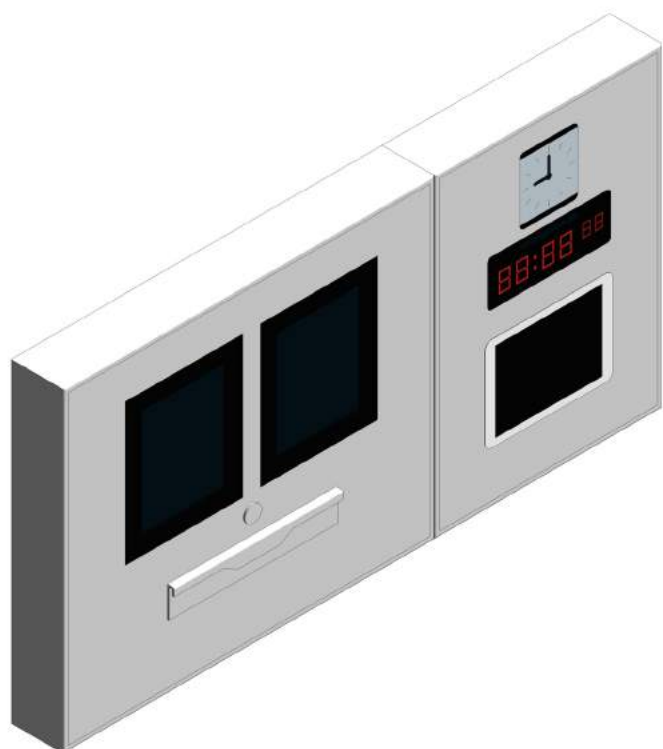
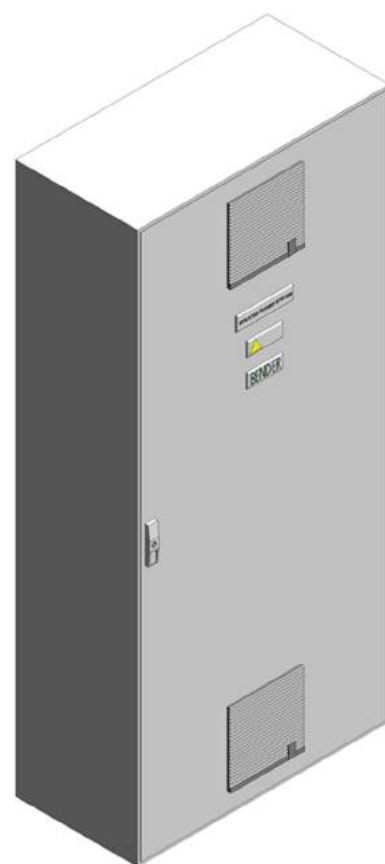
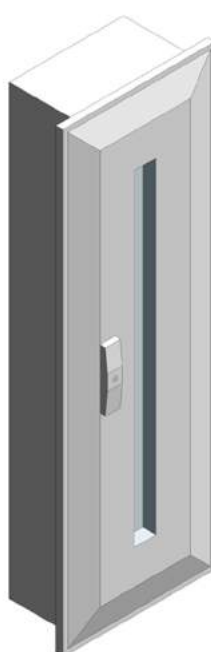
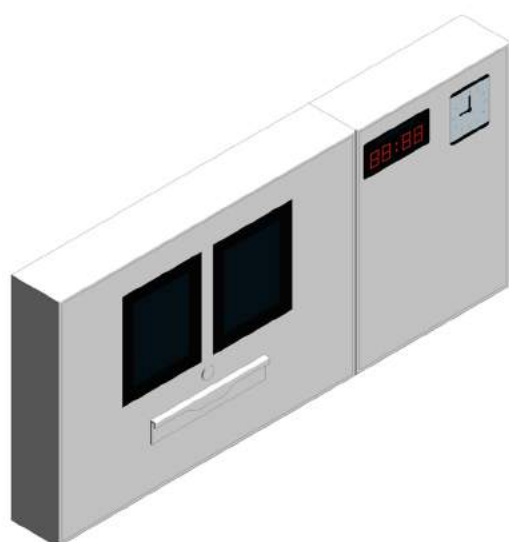




# BENDER

The Power in Electrical Safety<sup>©</sup>



Bender Electrical Components

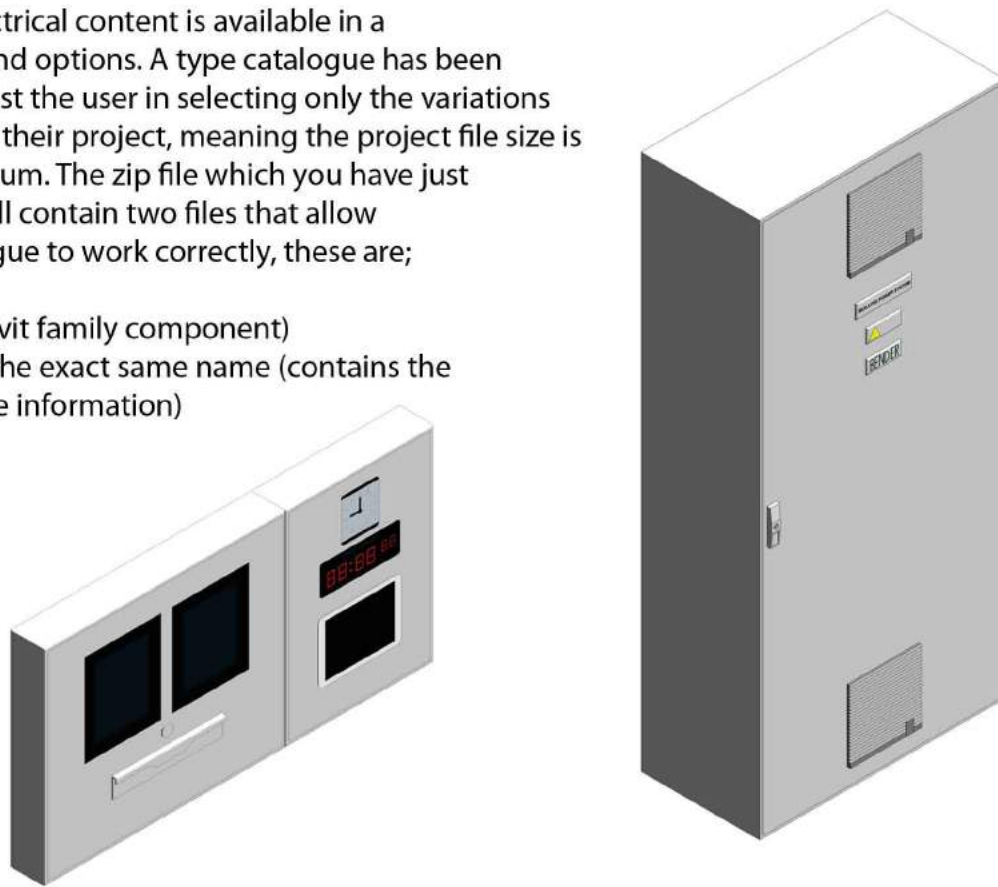
User Guide v1.0

Powered by **bimstore.co.uk**

## Bender Electrical Components - Type Catalogues

The Bender Electrical content is available in a range of sizes and options. A type catalogue has been provided to assist the user in selecting only the variations they require for their project, meaning the project file size is kept to a minimum. The zip file which you have just downloaded will contain two files that allow the type catalogue to work correctly, these are;

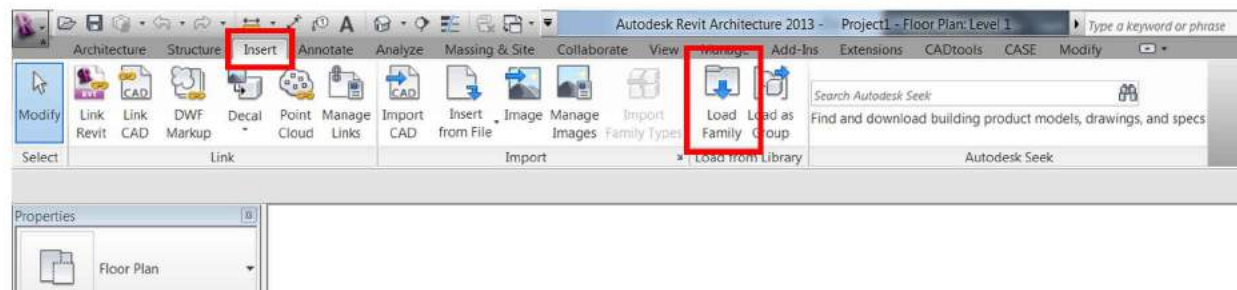
- the .rfa file (Revit family component)
- the .txt file of the exact same name (contains the type catalogue information)



## Loading the Bender Electrical components into your project

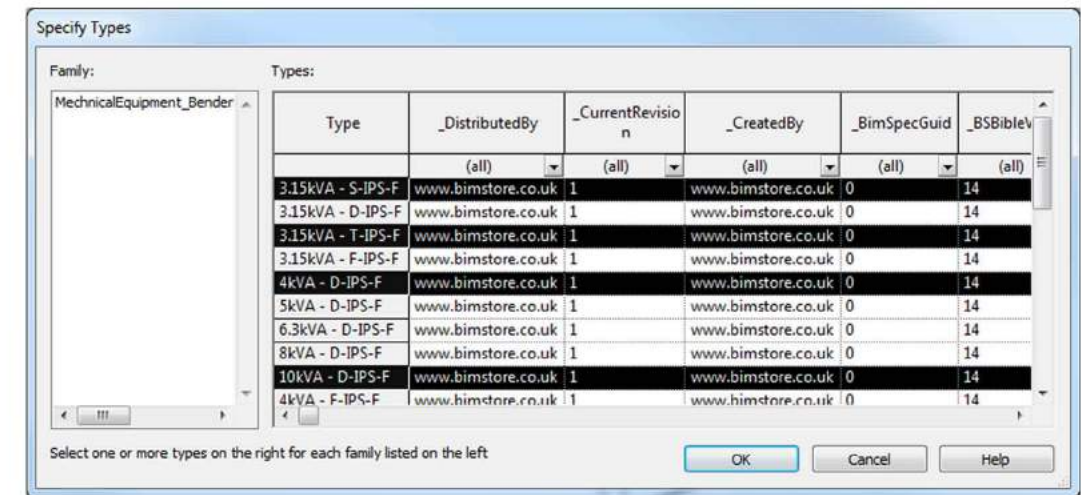
You can load the components into your project via the type catalogue using the following method:

1. Open the Revit file containing your 'project' and navigate to an appropriate view.
2. Go to the insert tab on the Revit ribbon and select 'Load Family'.



3. Navigate to the location of the saved Bender Electrical components you have just downloaded. Note - Please refer to the 'Type Catalogue' section above to ensure that the .txt file is saved in the correct location.

4. The type catalogue selector will now appear (see image below). Select the desired type/s from the scroll menu, the selected types will turn black once picked. To select multiple types, hold Shift or Ctrl.



5. Click OK to load these components into your project. The family is now embedded into your project and can be selected from the components button on the main Revit ribbon.

## Using the Bender Electrical Components additional features

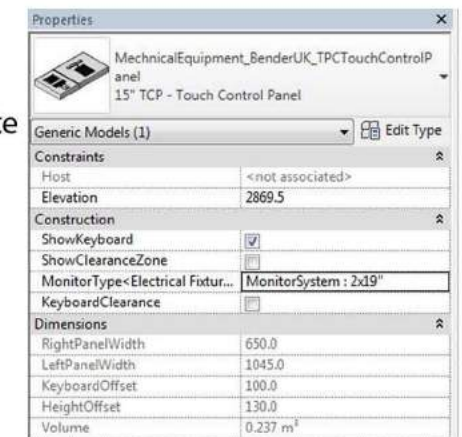
The Bender Electrical components have several additional built-in features to assist the user when specifying and placing the BIM component, these include user selectable dropdowns and clearance zones. To use these features please follow the steps below;

1. With the component loaded and positioned in your project select the Bender Electrical component. Once selected the 'Properties' dialogue box will appear (typically on the left hand side of the screen).

2. Scroll down the list of parameters to find the heading 'Clearance Zone'. Click the tick box and then apply to activate the clearance zone of the component.

3. Under the heading construction is the parameter 'MonitorType' adjust this to change between the available monitors.

Please note: depending on the component not all features are available.



## Other Notes

You can add the Bender Electrical components to your company template file, they will then be available without loading when starting a new project.

## Revisions

Version 1.0

**Bender GmbH & Co. KG**

P.O. Box 1161 • 35301 Gruenberg • Germany  
Londorfer Strasse 65 • 35305 Gruenberg • Germany  
Tel.: +49 6401 807-0 • Fax: +49 6401 807-259  
E-Mail: [info@bender.de](mailto:info@bender.de) • [www.bender.de](http://www.bender.de)



**BENDER Group**

BENDER UK Ltd.  
The Old Tannery,  
Low Mill Business Park,  
Ulverston Cumbria,  
LA12 9EE

bimstore Newcastle  
Spaceworks,  
Benton Park Road,  
Newcastle Upon Tyne,  
NE7 7LX